

4

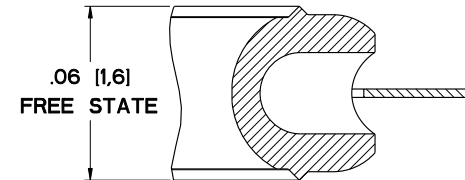
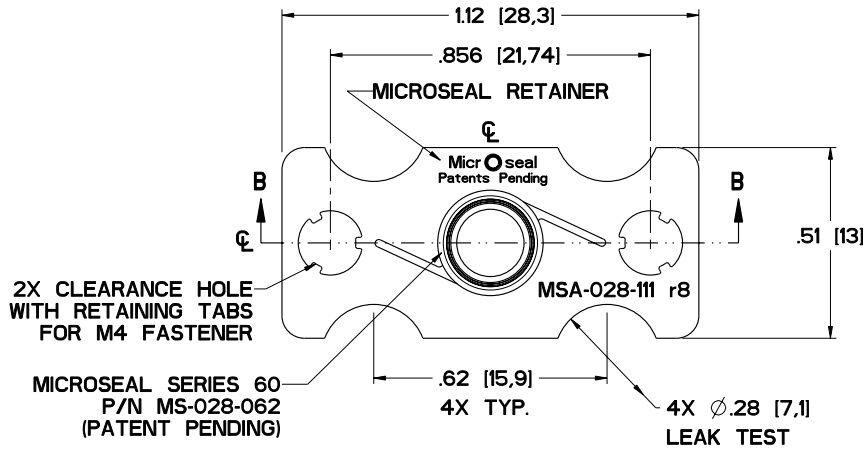
3

2

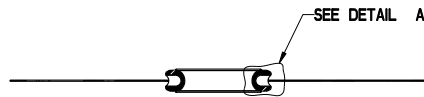
1

MICROFLEX TECHNOLOGIES PROPRIETARY INFORMATION
 THIS DRAWING IS THE EXCLUSIVE PROPERTY OF MICROFLEX TECHNOLOGIES AND EMBODIES A CONFIDENTIAL DESIGN. IT HAS BEEN FORWARDED TO YOU IN STRICT CONFIDENCE FOR A SPECIFIC PURPOSE AND AS A RECIPIENT YOU AGREE NOT TO USE, DISCLOSE, REPRODUCE OR COPY IT IN WHOLE OR IN PART WITHOUT THE EXPRESS WRITTEN CONSENT OF MICROFLEX TECHNOLOGIES AND TO IMMEDIATELY RETURN THE DRAWING UPON REQUEST.

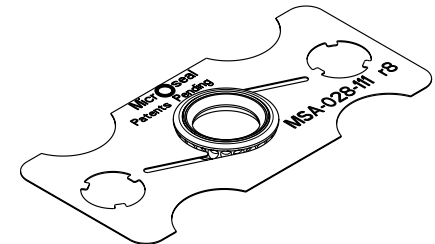
REVISIONS					
REV.	DESCRIPTION	EO#	DATE	ENG.	OLTY. MFG.
8	UPDATE DRAWING PER ECO NO. M02154	M04202	05-10-04	MD	MD MD



DETAIL A



SECTION B-B



NOTES: UNLESS OTHERWISE SPECIFIED.

- DUAL DIMENSIONING: INCH [MILLIMETER].
- PACKAGING: TRIPLE BAG.

FILE NAME: MSA-028-111-REV8	UNLESS OTHERWISE SPECIFIED DIMENSIONS ARE IN INCHES	 10001 Timothy Lane, Villa Park, CA 92861
MODEL NAME: MSA-028-111	DECIMALS DECIMALS ANGLES XX ±0.13 .XXX ±0.001 ±0.5° BREAK SHARP EDGES N/A	
USED ON: FLUID DELIVERY SYSTEMS	DRAWN: Michael J. Doyle 03-10-01	MICROSEAL ASSEMBLY, SERIES 60 SURFACE MOUNT, SEMI PR.1 MFC / MFM, 1-1/8"W
MATERIAL: N/A	ENGINEERING: Michael J. Doyle 03-10-01	
INTERPRET DRAWING PER ANSI Y 14.5M - 1982	QUALITY: Michael J. Doyle 03-10-01	SIZE C SCALE 4:1 DRAWING NO. MSA-028-111 REV. 8
	MANUFACTURING: Michael J. Doyle 03-10-01	DO NOT SCALE DRAWING SHEET 1 OF 1

4

3

2

1